

# Welcome

## Hamilton Pool Road Alternative Access Study

### Open House

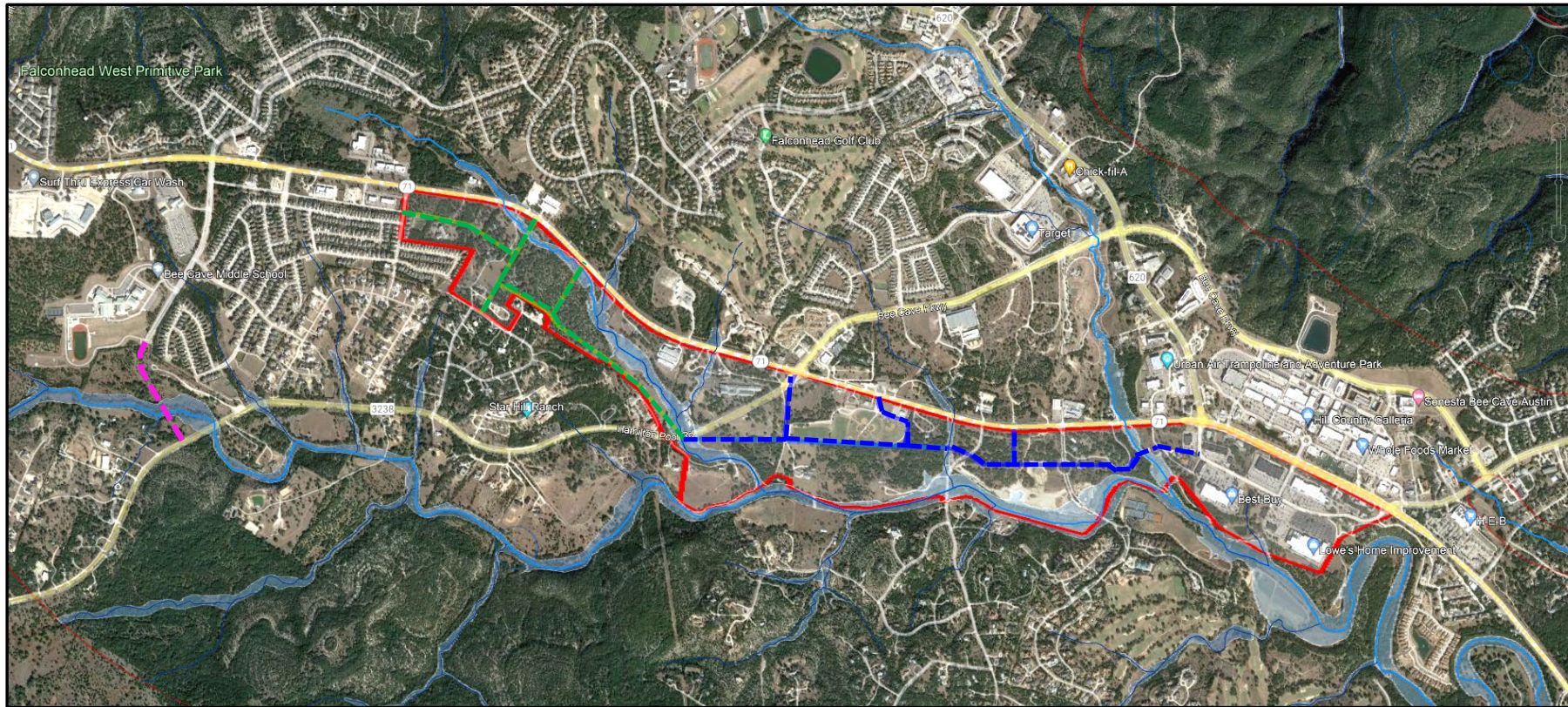
November 16, 2022

Bee Cave City Hall, 4000 Galleria Pkwy, Bee Cave, TX 78738

### Why am I here?

- Review introductory materials and exhibits
- Provide feedback

# Project Overview – Study Area & Objective



**Study Area** 

**Southwest Collector** 

From Palermo Drive to Hamilton Pool Road (RM 3238)

**HPR Extension** 

From Hamilton Pool Road (RM 3238) to Shops Parkway

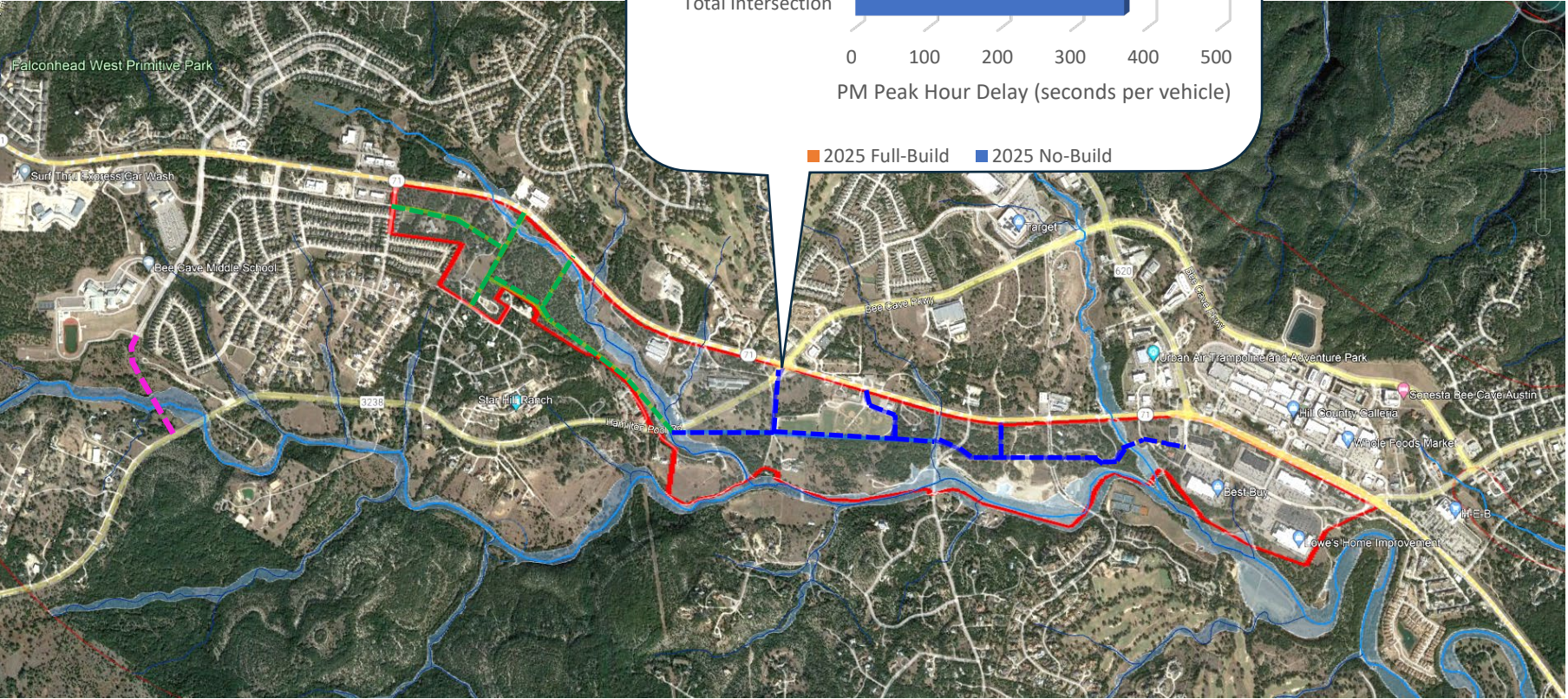
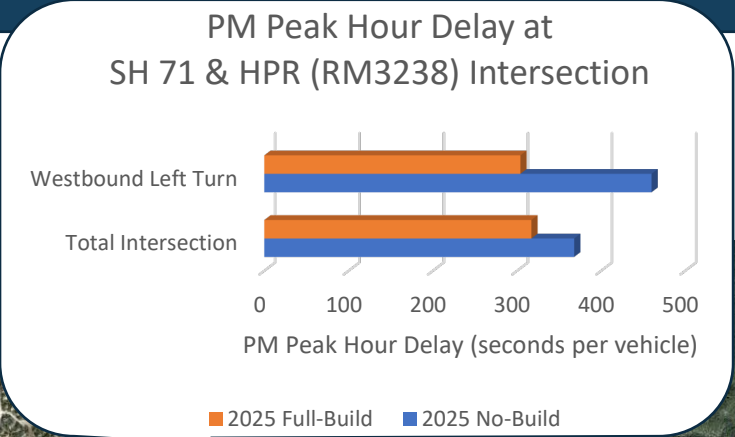
**Vail Divide Extension** 

By Others (LTISD)

**Study Objective**

Identify potential solutions to reduce reliance on State road network for local traffic, to ultimately increase network efficiency by providing alternate routes.

# Preliminary Results



**Study Area**

**Southwest Collector** - - - - -

From Palermo Drive to Hamilton Pool Road (RM 3238)

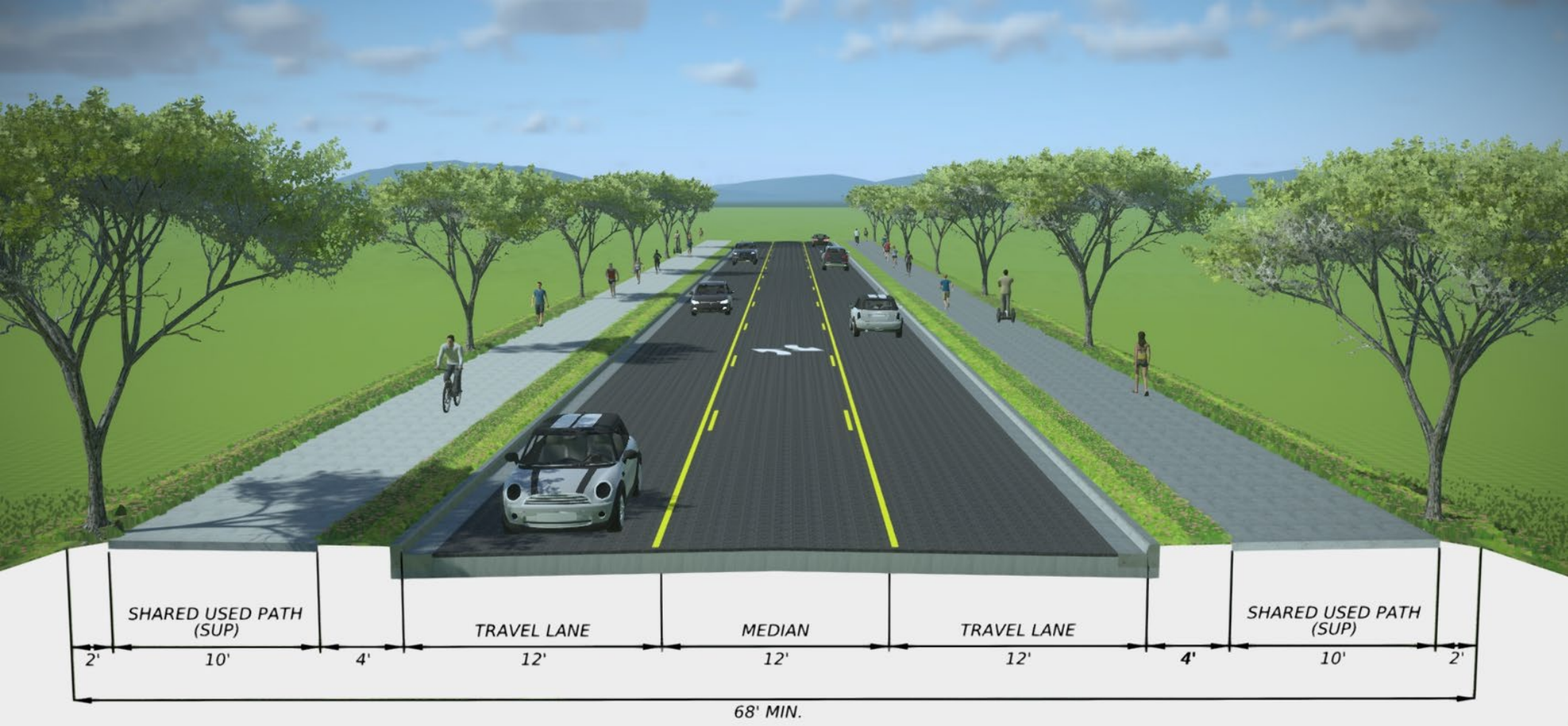
**HPR Extension** - - - - -

From Hamilton Pool Road (RM 3238) to Shops Parkway

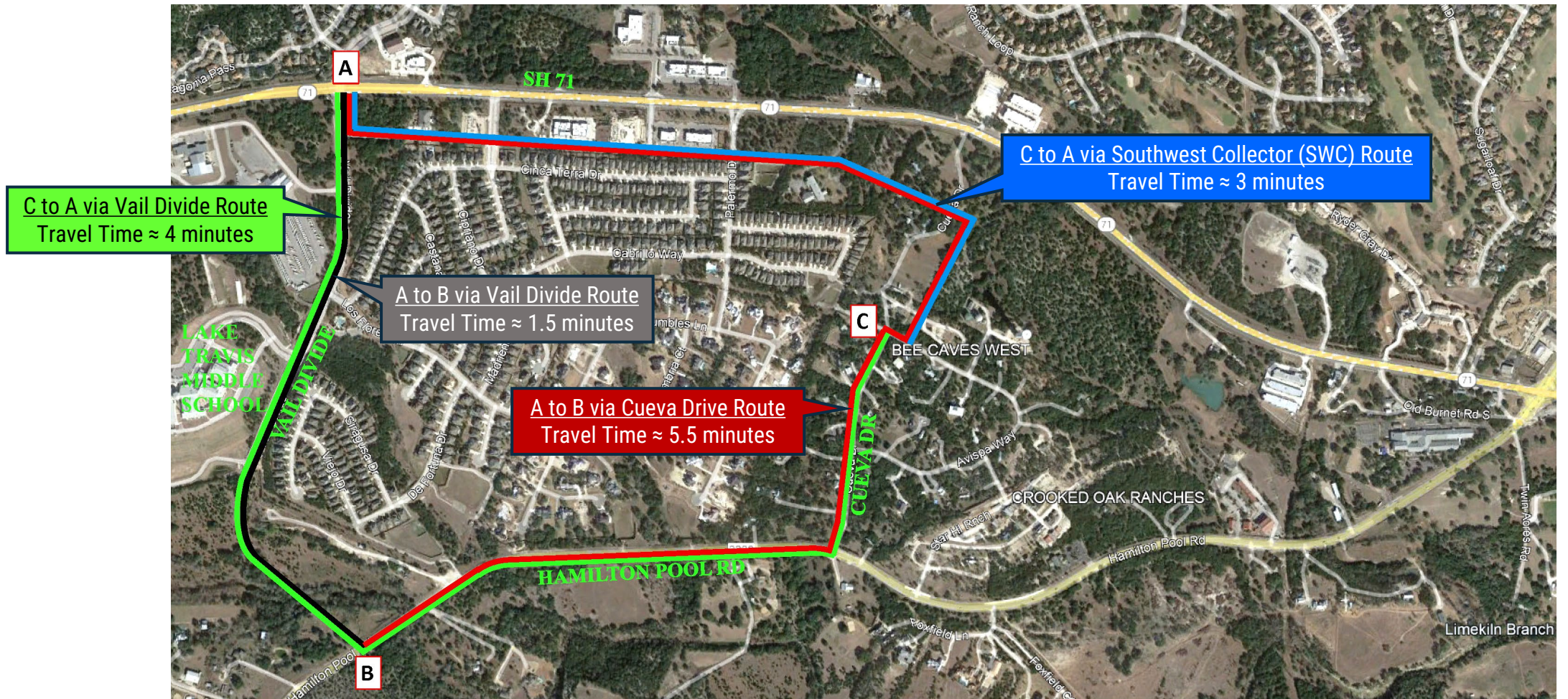
**Vail Divide Extension** - - - - -

By Others (LTISD)

# Preliminary Design Concepts



# Vail Divide - Travel Time Comparisons



# Preliminary Intersection Options



Option 1

## Advantages

- Maintains existing HPR (RM 3238) alignment

## Disadvantages

- Does not minimize traffic in front of Bee Cave Elementary School
- Severe intersection angle
- Estimated additional traffic signal (1) on HPR (RM 3238)

# Preliminary Intersection Options



Option 2

### Advantages

- Separates through traffic from School Traffic
- Reduces delay to through traffic
- Improves Safety

### Disadvantages

- Estimated additional traffic signals (2) on HPR (RM 3238)

# Preliminary Intersection Options



Option 3

## Advantages

- Minimizes traffic in front of Bee Cave Elementary School

## Disadvantages

- Estimated additional traffic signals (3) on HPR (RM 3238)



# Preliminary Intersection Options



Option 4

## Advantages

- Minimizes traffic in front of Bee Cave Elementary School

## Disadvantages

- Estimated additional traffic signals (2) on HPR (RM 3238)
- Reduced speed at “right angle” intersection on HPR (RM 3238) at proposed HPR Extension.

# Project Timeline



TASK	MAY 2022	JUNE	JULY	AUGUST	SEPTEMBER	OCTOBER	NOVEMBER	DECEMBER
Notice to Proceed								
Data Collection								
Traffic Analysis								
Preliminary Findings								
Public meeting								
Final Recommendations and Report								

# How to Provide Feedback

## Submit comments in any of the following ways:

- E-mail: [HPR\\_Comments@rtg-texas.com](mailto:HPR_Comments@rtg-texas.com)
- Fill out a comment card and mail to:

Rodriguez Transportation Group, Inc.  
Attn: HPR Alternative Access Study  
11211 Taylor Draper Ln #100  
Austin, TX 78759

Comments must be submitted or postmarked by  
**December 07, 2022**